

SUBSCRIBE TO **The Macomb Daily**

The Macomb Daily Online Edition

SEARCH

Classifieds



SITE MENU:

Select...

Home > Local News > Signal lights downed, traffic snarled in Macomb Township

THE MACOMB DAILY NEWS



Email Print

Signal lights downed, traffic snarled in Macomb Township

PUBLISHED: August 3, 2004

By Macomb Daily Staff



Macomb Daily photo by David Dalton

The intersection of 21 Mile and Hayes roads was closed much of Monday after the traffic signals were knocked to the ground.

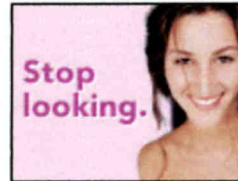
and road workers were hanging new signals in the afternoon and night, with the project expected to be completed by 10 p.m., Tatem said.

Each day, 59,000 vehicles - 41,000 on Hayes Road and 18,000 on 21 Mile Road - pass through the intersection, he said.

The intersection of 21 Mile and Hayes roads was closed much of Monday after the traffic signals were knocked to the ground.

No one was injured and no vehicles hit when a grass mower from the Macomb County Road Commission apparently caused a pole that supported the signals to fall about 9:30 a.m. Monday, said Edwin Tate, chief highway engineer for the commission.

Traffic was rerouted for a period, then the intersection was turned into a 4-way stop. DTE Energy erected a new pole by Monday afternoon,



Mcentral.com
your link to more news...
travel, finance, etc...

TOP JOBS

PROMOTIONS & ROUTE MARKETING REPS NEEDED
INDEPENDENT CONTRACTOR OPPORTUNITIES AVAILABLE I...

NURSE/LPN THE MEDICAL TEAM, a home health and private duty agency, has openings for nurs...

ASST. (DENTAL) Needed who truly wants to make a difference at Dr. Antolak's Shelby Twp. of...

ULTRASOUND TECH w/vascular exp. Full time for busy outpatient diagnostic center. Register...

[View all Top Jobs](#)

TOP HOMES

WASHINGTON TWP. Half acre & larger lots. Utilities. Some walkouts. Individuals & builders ...

LAND CONTRACTS! LAND CONTRACTS! 2 - 5 bdrm. homes most areas. Buy almost any home on Land ...

[View all Top Homes](#)

TOP AUTOS

[View all Top Autos](#)



Email This Story to a Friend



Printer Friendly Version